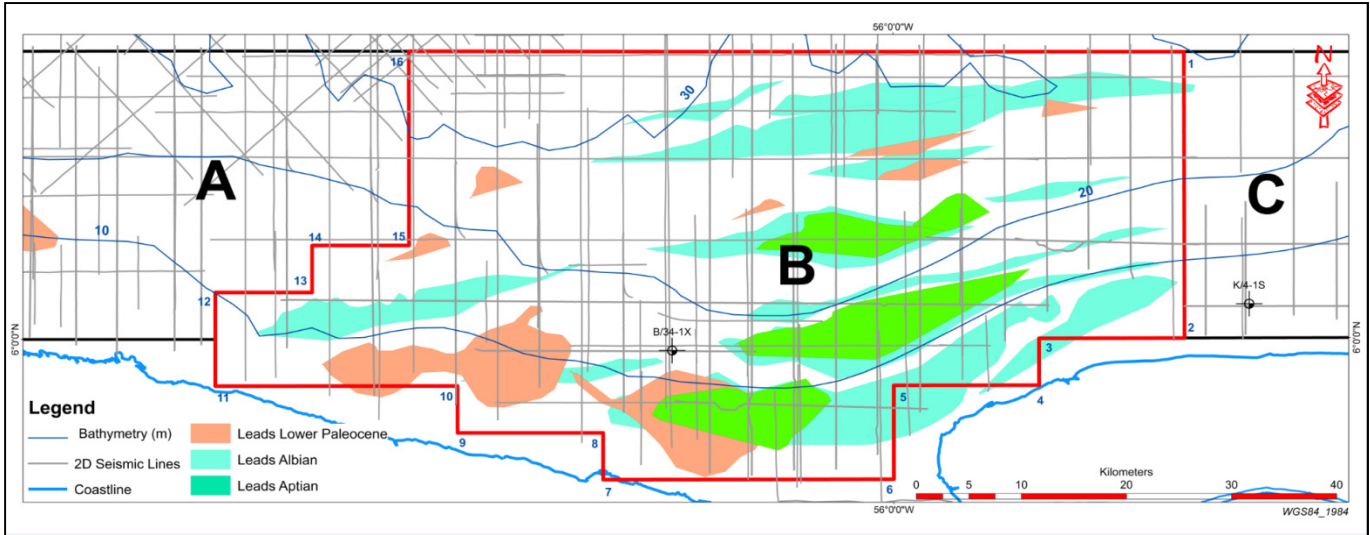


# Staatsolie Farm-in Opportunity Block B



**Acreage information**

Name: Block B  
 Area: 2886 km<sup>2</sup>  
 Well data: one exploration well drilled in 1982  
 Seismic data: over 1800 Km 2D seismic  
 Water depth: 1m - 35m  
 Location: NW of the producing fields

**Prospectivity**

Plays: 3 plays identified  
 Leads: 20 leads identified on 2D seismic  
 Oil indications: Paleocene & Cretaceous levels  
 Resource potential: 297 – 912 MMbbls  
 (risked prospective recoverable volumes)

